

IPR*4 Server Card

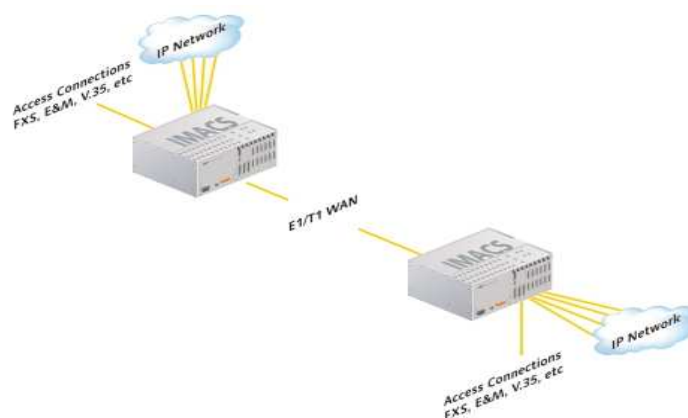
Features

- **Four auto-sensing 10/100 Base-T Ethernet ports**
- **128 independently addressable PPP links**
- **Creates PPP backbone for local command and control functions**
- **ARP and RIP support**
- **Compliant to RFC 2516 PPP and LCP**
- **Two cards per shelf support**

The IMACS enhanced IP routing (IPR*4) card (PRM-883270) provides four 10/100Mbps Ethernet interface ports on the IMACS allowing use of existing TDM networks to transport IP services. The enhanced IPR*4 card enables integration and deployment of IP services into remote locations currently served by E1s or T1s without a major investment or network upgrade. Many of these locations currently have IMACS products for multiplexing TDM services. With the IPR*4 card the IMACS can also be used to bridge and transport remote IP based devices. Any currently deployed IMACS (IMACS-600/800/900) can be upgraded to accommodate the enhanced IPR*4 card allowing the addition of IP services to any IMACS systems already in use.

The enhanced IPR*4 card has four 10/100Mbps Ethernet ports that can be used independently as routing ports to allow for ease of provisioning, multiple configurations and different implementations as needed.

The enhanced card will support all of the same feature sets as the original IMACS IPR card, plus many new features and protocols that will allow users to seamlessly upgrade and grow IMACS and IP networks without having to replace current platforms or upgrade to incorporate future technologies.





IPR*4 Server Card

Card Specification	Input Ethernet channels	4 auto-sensing 10/100 Base-T Ethernet ports
	Maximum card count	2
Standards Compliance	EN 50081-1 12/12/9, EN 61000-6-2:2001	
Product Numbers	883270 – IP Router * 4 server - stainless steel faceplate	
Physical Specification	Card height	8 inches (20cm)
	Card width	15/18 inches (2.35 cm)
	Card depth	7 1/2 inches (18.75cm)
	Power consumption	10.38 Watts
	BTU/hr	35.40
	Operational temperature	0 to 50 C, 32 to 122 F
	Storage temperature	-20 to 80 C, -4 to 176 F
IMACS Platform	Humidity	0 to 95% humidity, non-condensing
	IMACS Chassis	891630 IMACS 600, 891830 IMACS 800, or 891930 IMACS 900
	Control CPU card	880370 Cross-connect CPU
	System Host Code	Host Code v6.1.0 or higher
	Interface card	892260, 892360 and 892460
	Power supply options	All AC and DC power supplies supported

