



# FIBER-OPTIC SPLICE TRAILER

## MODEL:

7 x 12ft

## PRODUCT:

Fiber-Optic Splice Trailer

## OVERVIEW:

Our mobile fiber splicing trailers are cost-effective, customized to your needs and designed for efficient fiber-optic splicing and testing. With ample room to accommodate crew and all necessary equipment and tools required for fiber-optic splicing.

- We also offer a 6 x 10ft and 8.5ft x 12ft Fiber-Optic Splice Trailers.

For those Fiber Technicians who will be out in the field for an extended period of time we also offer and 8.5 x 18ft extended stay Fiber Optic Splice Trailer.

Comes outfitted with: full Bathroom, shower, fridge, microwave, and couch that pulls out into a bed.

- We also offer a 8.5 x 16ft Fiber Optic Splice Trailer that comes with mini bath (sink & toilet), fridge, and microwave.



7 X 12FT

# FIBER OPTIC SPLICE TRAILER SPECIFICATIONS

## TRAILER

- 3 Fiber Cable Access doors with brushes
- Metal exterior available in a variety of colors
- V-Nose with vertical ATP trim
- 24" Stone Guard on front
- 36" RV-style side and rear door with flush lock
- Non-powered roof vent or sidewall
- Exterior generator storage cabinet (on V-nose)
- NEMA L5-30R generator input (generator optional)

## EXTERIOR & MECHANICAL

- 15" Radial Tires / Silver Mod Wheels
- Tandem 3500 lbs spring axles with 4" drop and EZ lube hubs
- 2000 lbs triple steel tongue jack
- Std. trailer 7-way round electrical plug
- 2 5/16" coupler LED Strip tail-lights
- Two flush mount DOT strobes & area lights - all four sides

## STRUCTURAL

- 3/4" plywood floor/painted underneath
- Premium 3/8" plywood sidewalls
- 1"x1 1/2" steel tube in walls and ceiling
- 6" I-Beam main frame
- Wall members: 16" O.C.
- Floor cross-members: 16" O.C.
- Roof members: 24" O.C.
- Galvalume steel roof

## INTERIOR

- 3 15"x18" Fiber entry doors with brushes
- 84" (7') interior height
- 34"H x 24"D work counters
- Four cabinets and four storage drawers
- AC/Heat: 13,500 BTU

## ELECTRICAL

- 50A Breaker panel (8 position)
- Seven bright LED strip light with switch
- 12V Dome light with switch
- Battery backup for lighting
- 110VAC GFCI outlets
- 3x Interior / 3x Exterior

## OPTIONS

We offer several options to upgrade the Fiber Optic Splice Trailer

- Pintle Hitch/Bulldog Hitch
- Upgrade to 1 15k BTU AC & Heat or 2 15k BTU AC & Heat
- Floor hatch (work inside while over the handhold/manholes)
- Extra insulation in walls
- Extra LED lighting
- Extra Strobe lights

## CERTIFICATION

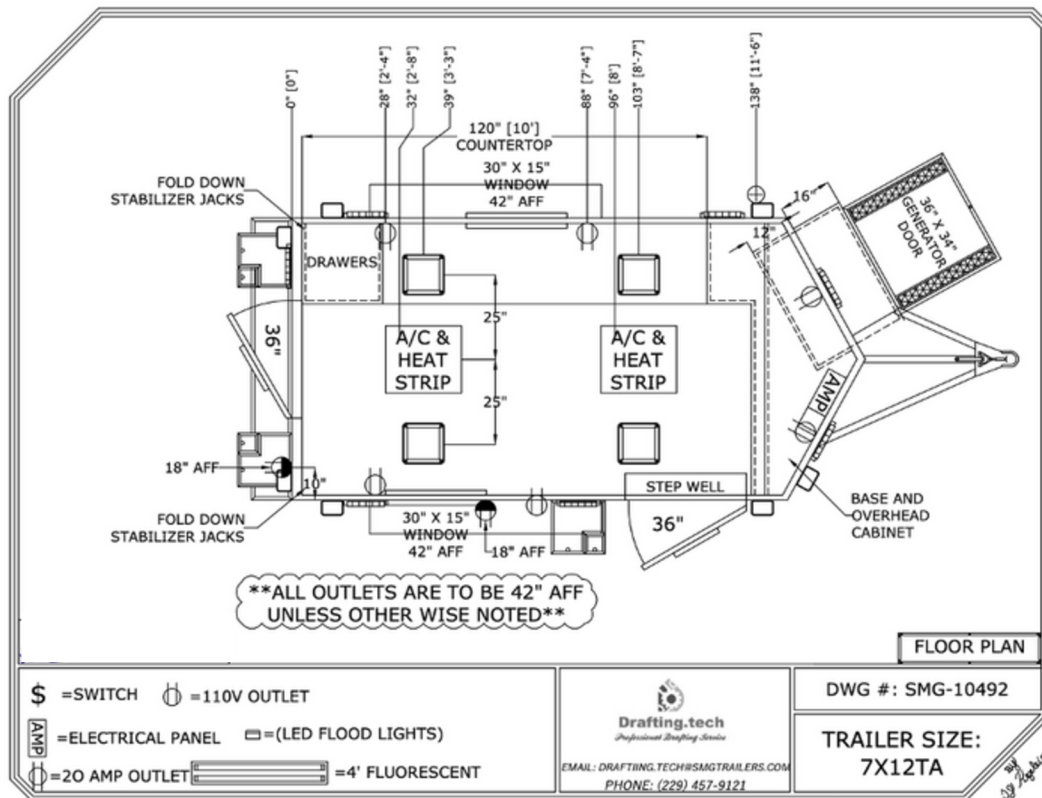
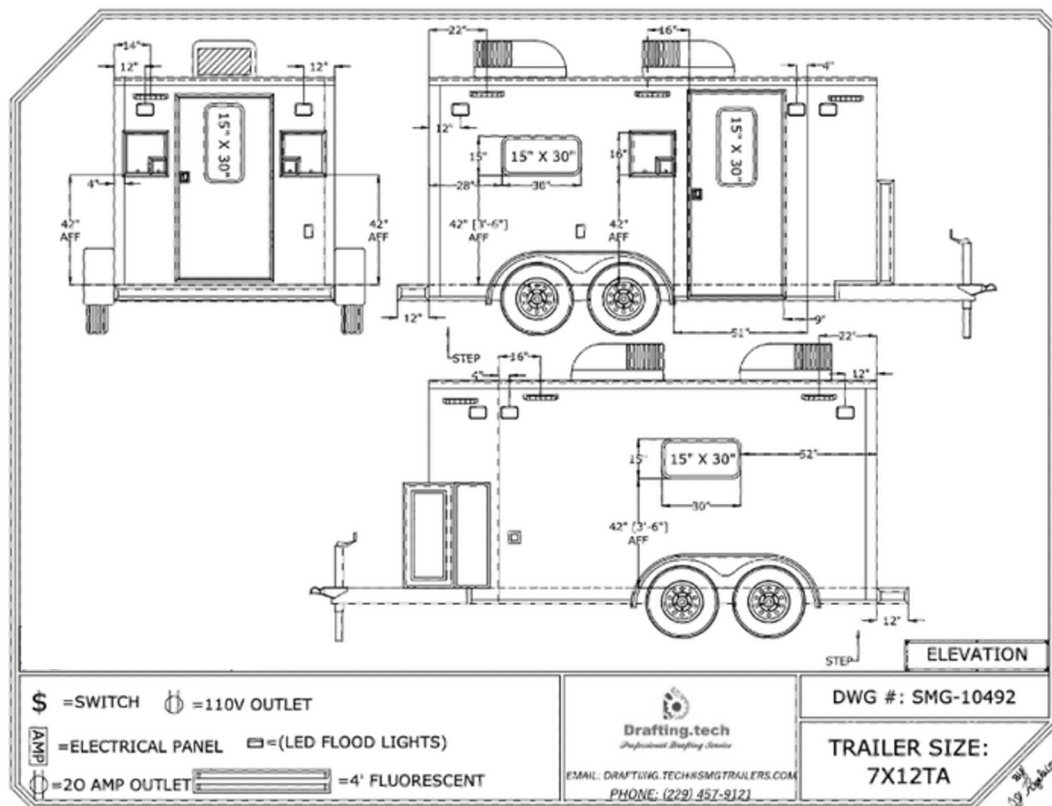
- DOT Approved

## EXTERIOR COLOR OPTIONS



- These are just a few of the many colors we offer.

# FIBER OPTIC SPLICE TRAILER CAD DRAWINGS



**Product Source International Datacomm LL -  
Corporate Headquarters  
330 Franklin Turnpike  
Mahwah, NJ 07430  
Corp HQ 201-488-6000**

[www.psitec.com](http://www.psitec.com) | [sales@psitec.com](mailto:sales@psitec.com)

**Jeffrey Matson – Regional Manager  
Cell 727-793-1010  
[jeff@psitec.com](mailto:jeff@psitec.com)**